

# Complete Blood Cells Findings Among Covid-19 In-Patients at Covid-19 Reference Hospitals, West Nusa Tenggara

*by Kurniawan Kurniawan*

---

**Submission date:** 11-Jul-2022 01:39AM (UTC-0500)

**Submission ID:** 1869091471

**File name:** Covid19.pdf (424.66K)

**Word count:** 4475

**Character count:** 21493



## Complete Blood Cells Findings Among Covid-19 In-Patients at Covid-19 Reference Hospitals, West Nusa Tenggara

\*I Putu Dedy Arjita, Sabariah, Ayu Anulus

Faculty of Medicine, Universitas Islam Al-Azhar  
Jl. Unizar No.20, Turida, Sandubaya, Mataram 83232, West Nusa Tenggara

\*Email: [iputudedyarjita@unizar.ac.id](mailto:iputudedyarjita@unizar.ac.id)

DOI: 10.31964/mltj.v6i2.339

**Abstract:** Covid-19 virus still attacks various worldwide sectors, especially health. The current problem is that the Covid-19 vaccine is still in progress, so the best strategy to deal with this problem is to prevent this disease's spread. In the laboratory sector, complete blood cells tend to use as a screening method for disease, especially infectious disease. This study describes the CBCs findings among Covid-19 patients at Covid-19 reference hospitals West Nusa Tenggara. This study will enhance the data to provide early diagnosis for patients with Covid-19. This was a retrospective study conducted from Mei to July 2020. A total of four hospitals have access to 85 medical records of Covid-19 patients. The patient's data included in this study should have (1) initials; (2) Gender; (3) Age; (4) Patients' disease other than Covid-19; and (5) The results of the first CBCs examination. Incomplete data excluded from the study. The CBCs data collected from Hospital Management Information Systems (HMIS) and Laboratory Information Systems (LIS). The data were analyzed descriptively. The results showed that 5.88% of patients with comorbidities or another disease reported abnormal CBCs results. In comparison, another 94.12% of patients without another disease than Covid-19 tend to present normal results. In conclusion, most of the CBC's findings among Covid-19 patients in West Nusa Tenggara show normal value among patients with no disease other than Covid-19.

**Keyword:** Covid-19; complete blood cells; hospital management information systems; laboratory information systems

### INTRODUCTION

In recorded human history, the latest Covid-19 is the third coronaviral (CoV) outbreak (Yi et al., 2020). The world has faced highly pathogenic human CoVs, i.e., Severe Acute Respiratory Syndrome (SARS-CoV) and Middle East Respiratory Syndrome (MERS-CoV), which initially triggered an outbreak in China and Saudi Arabia in 2003 and 2012, respectively. The virus spread and reaches quickly worldwide, with horrible morbidity and mortality (Paules et al., 2020). The Covid-19 infection symptoms begin to appear after a five to six-day incubation period (Qun Li et al., 2020). The time between the onset of COVID-19 symptoms to death ranges from 6-41 days, with a median of 14 days (Wang et al., 2020).

As the symptoms, fever is often occurring among Covid-19 cases, which can be accompanied by no symptom. Dry cough, shortness of breath, dizziness, muscle ache, sore throat, rhinorrhea, headache, diarrhea, chest pain, vomiting, and nausea are other symptoms of Covid-19 infection. Sometimes, patients had no fever, and several had no irregular radiological findings (Guan et al., 2020).

A covid-19 pandemic occurs to be an issue to the world. All health professionals have attempted to find out how to prevent, manage, and cure this pandemic. Covid-

**Corresponding Author:** I Putu Dedy Arjita  
Faculty of Medicine, Universitas Islam Al-Azhar Mataram  
Jl. Unizar No.20, Turida, Sandubaya, Mataram 83232, West Nusa Tenggara  
Email: [iputudedyarjita@unizar.ac.id](mailto:iputudedyarjita@unizar.ac.id)

19 patients with and without symptoms or abnormalities should be screened for the virus for early diagnosis (Chen et al., 2020). Besides, many studies have reported improvements in the laboratory detection data of Covid-19 patients, and studies have usually concentrated on one or more hematology parameters (Fan et al., 2020; Y. Huang et al., 2020; Terpos et al., 2020).

Infected patients with COVID-19, whether hospitalized or outpatient, are at high risk for venous thromboembolism (Terpos et al., 2020). Thrombocytosis, lymphopenia, and increased C-reactive protein were typical laboratory findings, although the majority of Covid-19 patients (Huang et al., 2020). Another study from Fan (2020) reported that older age, lymphopenia, and raised lactate dehydrogenase (LDH) were associated with intensive care unit admissions. Patients who transferred to the intensive care unit had a deeper nadir absolute lymphocyte count (ALC), absolute monocyte count (AMC), hemoglobin, and a higher peak of absolute neutrophil count (ANC) and LDH than patients who did not need ICU stay.

The most widely conducted hematological laboratory test worldwide is a CBC, and most routine laboratories fitted with a hematology analyzer. Some of the studies reported a variety of abnormal changes in CBCs parameters among Covid-19 patients. There is a lack of a summary of the data and the geographical variety, so it is essential to conduct this study to describe the CDCs findings among Covid-19 patients at Covid-19 reference hospitals in West Nusa Tenggara, Indonesia.

## MATERIALS AND METHOD

This research was conducted in May-July 2020 at the Mataram City Hospital, Bhayangkara Hospital, Patuh Patut Pati Hospital, and North Lombok Regional Hospital. This study's ethical feasibility comes from the Ethics Committee of the Faculty of Medicine, Al-Azhar Islamic University, with number: 19/EC/FK-06/UNIZAR/V/2020. The 85 patients' data used in this study was the first result of patients' CBCs since confirmed positive for Covid-19. The data included in this study should have (1) initials; (2) Gender; (3) Age; (4) Patients' disease other than Covid-19; and (5) The results of the first CBCs examination. Incomplete data excluded from the study. The variables studied were gender, age, hemoglobin, hematocrit, number of leukocytes, number of platelet cells, number of erythrocyte cells, erythrocyte index (MCV, MCH, MCHC), leukocyte count (absolute and percentage), red cell distribution width (RDW-CV), and neutrophils-lymphocytes ratio.

Data collection started from the Hospital Management Information Systems (HIMS) to see the medical record number, initial, gender, age, and comorbidities of Covid-19 patients. Some hospitals had HIMS that integrated with the Laboratory Information System (LIS) so that patient data and CBCs results can be accessed more easily. In another hospital, researchers must continue with patient data from HIMS to obtain CBCs of patients in the laboratory if HIMS and LIS are not integrated. The data obtained grouping by age to the study variables, computerized, and then presented in tabular form.

## RESULTS AND DISCUSSION

This study conducted using 85 data from the medical record. The data calculated, and the result shows that female patients (64%) with positive Covid-19 status were more than male patients (36%) (Figure 1).

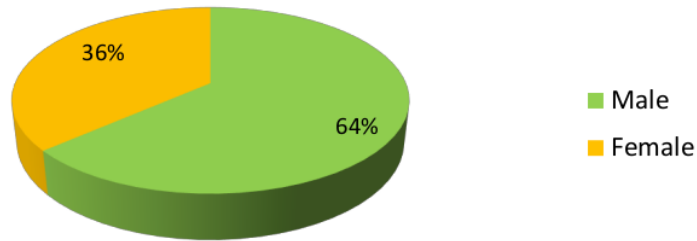


Figure 1. Gender distribution of Covid-19 patient's data (n=85)

Figure 2 shows that patients with positive Covid-19 were one patient aged two years old (<5 years old), eight patients aged 6-19 years old, 14 patients aged 20-29 years old, 17 patients aged 30-39 years old, 18 patients aged 40-49 years old, 14 patients aged 50-59 years old, and 13 patients aged more than 60 years old.

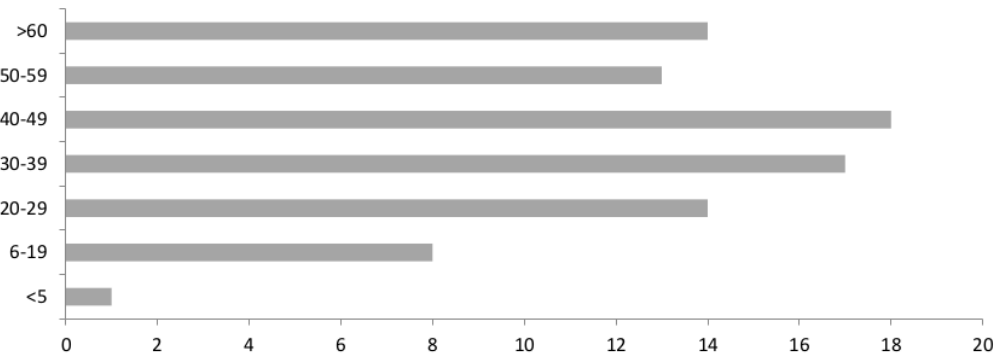


Figure 2. Age Distribution of Covid-19 Patient's Data (n=85)

Table 1. Data Characteristics among Covid-19 Patients without Comorbidity Disease

Variable	n=80					
	n	%	Mean	SD	Min	Max
Sex						
Male	49	61.25				
Female	31	38.75				
Age			39.84	16.34	2.00	75.00
<5	1	1.25				
6-19	8	10				
20-29	14	17.5				
30-39	17	21.25				
40-49	18	22.5				
50-59	13	16.25				
>60	9	11.25				

Table 2. Hemoglobin, Red Blood Cell, Hematocrit, Platelet, White Blood Cell, MCV, MCH, and MCHC Results among Covid-19 Patients without Comorbidity Disease

Variable	n	%	n=80			
			Mean	SD	Min	Max
Hemoglobin (13 - 18 mmol/L)			13.65	2.57	6.20	24.30
Low	18	22.5				
Normal	58	72.5				
High	4	5				
RBC (4.4 – 5.6 x 10 <sup>12</sup> cell/L)			4.83	0.75	2.10	6.56
Low	13	16.25				
Normal	54	67.5				
High	13	16.25				
Hematocrit (40% - 50%)			39.77	6.52	16.60	52.20
Low	21	26.25				
Normal	55	68.75				
High	4	5				
Platelets (170 – 380 x10 <sup>9</sup> /L)			286.99	90.41	21.00	620.00
Low	5	6.25				
Normal	64	80				
High	11	13.75				
MCV (80 – 100 fL)			80.61	12.04	7.90	94.20
Low	26	32.5				
Normal	54	67.5				
MCH (28– 34 pg)			28.19	3.74	17.30	50.50
Low	35	43.75				
Normal	44	55				
High	1	1.25				
MCHC (32 – 36 g/dL)			33.89	1.68	26.40	37.40
Low	5	6.25				
Normal	68	85				
High	7	8.75				
WBC (3.20 – 10 x10 <sup>9</sup> /L)			9.25	4.72	3.69	36.13
Low	1	1.25				
Normal	53	66.25				
High	26	32.5				

The results from 80 positive Covid-19 patients show mostly normal conditions on all parameters from the first CBC examination (at first admission) (Table 1). The standard value of assessing the low, high, and normal value of each parameter is based on clinical data interpretation guidelines by the Indonesian Ministry of Health (2011).

Fan et al. (2020) reported that most Singapore patients had normal CBC (normal Hb, WBC, and platelet count).<sup>2</sup> There were no patients with moderate to severe thrombocytopenia, commonly seen in other viral diseases, such as dengue fever, prevalent in Indonesia.

9  
 Table 3. Differential blood count, Neutrophil Lymphocyte Ratio, and Platelet Lymphocyte Ratio results among Covid-19 Patients without Comorbidity Disease

Variable	n	%	Mean	n=80		
				SD	Min	Max
Basophil (0-2%)			0.69	2.08	0.00	17.80
Normal	77	96.25				
High	3	3.75				
Eosinophil (0-6%)			3.37	3.13	0.00	13.40
Normal	65	81.25				
High	15	18.75				
Neutrophil (40-70%)			56.02	18.47	0.30	94.70
Low	7	8.75				
Normal	61	76.25				
High	12	15				
Lymphocyte (15-45%)			31.55	12.38	2.00	62.80
Low	11	13.75				
Normal	50	62.5				
High	19	23.75				
Monocyte (0-10%)			8.03	6.15	1.30	36.90
Normal	63	78.75				
High	17	21.25				
Basophil (0-0.15 x10 <sup>6</sup> /L)			0.14	0.22	0.00	1.08
Normal	60	75				
High	20	25				
Eosinophil (0-0.5 x 10 <sup>6</sup> /L)			0.62	1.77	0.00	14.00
Normal	62	77.5				
High	18	22.5				
Neutrophil (1.26-7.3 x 10 <sup>6</sup> /L)			5.44	4.72	0.02	33.20
Low	4	5				
Normal	64	80				
High	12	15				
Lymphocyte (0.8-4 x 10 <sup>6</sup> /L)			2.61	1.13	0.34	6.76
Low	4	5				
Normal	68	85				
High	8	10				
Monocyte (0.1-0.8 x 10 <sup>6</sup> /L)			0.69	0.55	0.15	3.13
Normal	63	78.75				
High	17	21.25				
NLR (3.13-5.0)			2.96	5.78	0.00	36.20
Normal	69	86.25				
High	11	13.75				
PLR (>180)			140.12	111.23	10.40	720.59
Normal	69	86.25				
High	11	13.75				

Normal or low hemoglobin levels cannot be used as a diagnostic parameter for Covid-19 infection but can be used as a supporting parameter in determining the



severity or recovery of patients during treatment (Fan et al., 2020; Huang et al., 2020; Lippi & Plebani, 2020).

In general, the white blood cell count appears <sup>1</sup> normal or decreased in Covid-19 patients at first admission (Huang et al., 2020). The same findings were observed in asymptomatic patients (Hu et al., 2020). Also, age dependence has been reported to be associated with disease severity, and a higher WBC count has been observed in elderly patients than younger adults with Covid-19 (Lin et al., 2020).

The 80 samples showed a tendency for the patient's platelet count to be normal because most patients did not have comorbidities, so that the severity of this disease was thought to be low. Huang et al. (2020) reported that as many as 8% of patients requiring Intensive Care Unit (ICU) care had a low platelet count compared to 4% of patients who did not require ICU care.

Table 4. Data Characteristics among Covid-19 Patients with Another Disease

Variable	n	%	n=5		
			Mean	SD	Min Max
Sex					
Male	5	100.00			
Age					
50-59	1	20.00			
>60	4	80.00			
Comorbid Disease					
Dyspnea	1	20.00			
Urinary tract infection + benign prostatic hyperplasia	1	20.00			
Chronic obstructive pulmonary disease	1	20.00			
Chronic kidney disease + Hypertension Stage 2	1	20.00			
Pulmonary tuberculosis + chronic kidney disease	1	20.00			

Table 2 shows a total of five positive Covid-19 patients with another disease reported. Most of them were elderly people. There were only three patients with <sup>10</sup> morbid disease of Covid-19 (i.e., chronic kidney disease + hypertension stage 2; chronic obstructive pulmonary disease; and pulmonary tuberculosis + chronic kidney disease). CBC parameters in this <sup>10</sup> data were most abnormal in the neutrophil percentage, neutrophil absolute, neutrophil-lymphocyte ratio (NLR), and platelet lymphocyte ratio (PLR).

Hu et al. (2020) reported that there was variability within the severe group, <sup>1</sup> with 87.5% of critically ill patients having neutrophilia. Other investigators have also reported <sup>5</sup> neutrophilia in some elderly patients after admission (Lin et al., 2020). The likelihood of neutrophilia being a predictor of disease severity has been further supported by other investigators who investigated 82 deaths in Covid-19 patients and demonstrated that neutrophilia was present in 74.3% of cases after admission and increased to 100% in the last 24 hours before death (Zheng et al., 2020)

Table 5. Hemoglobin, Red Blood Cell, Hematocrit, Platelet, White Blood Cell, MCV, MCH, and MCHC Results among Covid-19 Patients with Another Disease

Variable	n	%	n=5			
			Mean	SD	Min	Max
Hemoglobin (13 – 18 mmol/L)			12.78	2.79	8	15.2
Low	1	20.00				
Normal	4	80.00				
RBC (4.4 – 5.6 x 10 <sup>12</sup> cell/L)			4.36	0.86	2.9	5.2
Low	1	20.00				
Normal	4	80.00				
Hematocrit (40% - 50%)			37.28	8.79	24	47.9
Low	3	60.00				
Normal	2	40.00				
Platelets (170 – 380 x10 <sup>9</sup> /L)			280	184	121	589
Low	1	20.00				
Normal	3	60.00				
High	1	20.00				
MCV (80 – 100 fL)			85.56	6.64	76.5	92.6
Low	1	20.00				
Normal	4	80.00				
MCH (28– 34 pg)			29.38	1.38	27.9	31.1
Low	1	20.00				
Normal	4	80.00				
MCHC (32 – 36 g/dL)			34.44	2.01	31.8	36.5
Low	1	20.00				
Normal	2	40.00				
High	2	40.00				
WBC (3.20 – 10 x10 <sup>9</sup> /L)			12.06	4.56	5.4	16.5
Normal	2	40.00				
High	3	60.00				

A study in Wuhan with a sample of 40 people consisting of 15 men (37.5%) and 25 women (62.5%) stated that absolute neutrophil levels were significantly higher in severe cases of Covid-19 than in severe cases (Liu et al., 2020).

Increased NLR and age were significantly associated with disease severity. The binary logistic analysis identified increased NLR as an independent factor for poor clinical outcome of Covid-19 (Yang et al., 2020). Increased NLR is a risk factor for death not only in infectious diseases but also in malignancies, acute coronary syndromes, intracerebral hemorrhage, polymyositis, and dermatomyositis (Azab et al., 2010; Giede-Jeppe et al., 2017; Guthrie et al., 2013; Ha et al., 2018).

Qu et al. (2020) proposed PLR as an indicator reflecting the severity of inflammation in the treatment process by comparing the PLR changes during treatment. It was found that the higher the PLR cut-off point, the longer patient stays in the hospital. Therefore, the investigators speculate that changes in the platelet/lymphocyte ratio in the blood during treatment may reflect disease progression and Covid-19 patients' prognosis. This disparity in numbers may, in part, represent the extent of the epidemiological data available.



9  
 Table 6. Differential Blood Count, Neutrophil Lymphocyte Ratio, and Platelet Lymphocyte Ratio Results among Covid-19 Patients with Another Disease

Variable	n	%	n=5			
			Mean	SD	Min	Max
Basophil (0-2%)			0.28	0.13	0.1	0.4
Normal	5	100.00				
Eosinophil (0-6%)			0.84	1.06	0.1	2.7
Normal	5	100.00				
Neutrophil (40-70%)			80.16	6.43	72.5	89.2
Normal	1	20.00				
High	4	80.00				
Lymphocyte (15-45%)			12.8	3.79	7.8	16.8
Normal	5	100.00				
Monocyte (0-10%)			5.92	2.86	2.6	10
Normal	4	80.00				
High	1	20.00				
Basophil (0-0.15 x10 <sup>6</sup> /L)			0.04	0.05	0	0.1
Normal	5	100.00				
Eosinophil (0-0.5 x 10 <sup>6</sup> /L)			0.1	0.17	0	0.4
Normal	5	100.00				
Neutrophil (1.26-7.3 x 10 <sup>6</sup> /L)			9.92	4.33	3.9	14.8
Normal	1	20.00				
High	4	80.00				
Lymphocyte (0.8-4 x 10 <sup>6</sup> /L)			1.42	0.34	0.9	1.8
Normal	5	100.00				
Monocyte (0.1-0.8 x 10 <sup>6</sup> /L)			0.62	0.19	0.4	0.9
Normal	4	80.00				
High	1	20.00				
NLR (3.13-5)			6.9	2.83	4.3	11.4
High	2	40.00				
PLR (>180)			198.5	116	94.5	380
Normal	3	60.00				
High	2	40.00				

The limitation of this study is that the data still limit to 85 patients. A higher number of data can enhance the study. Another limitation is that CBCs cannot be used as a determining indicator of the presence of the Covid-19 virus in a patient's blood. This complete blood count is more precisely used as a supporting parameter in determining the patient's severity or recovery during the treatment period. Careful evaluation of whole blood parameters at the start and during the disease can help clinicians formulate a tailored treatment approach and promptly provide intensive care to patients who are most in need.

## CONCLUSION

Most of the CBCs findings among Covid-19 patients at Covid-19 reference hospitals in West Nusa Tenggara show normal value among patients with no disease other than Covid-19. Older age and having comorbidities show a complete blood cell picture different from other Covid-19 patients who have confirmed positive without comorbidities. Several studies that have been conducted in several countries, especially those outside of Wuhan, China, show some similarities in the percentage of blood cell levels from hematological parameters that tend to be normal. The next study should add a greater number of patient's data so the result can be generalized.

## ACKNOWLEDGEMENT

The authors are thankful for the grants from Al-Azhar Islamic University, Mataram, West Nusa Tenggara. We are also thankful for Mataram City Hospital, Bhayangkara Hospital, Patuh Patut Patju Hospital, and North Lombok Regional Hospital for their support so the data can be collected and the research can be conducted.

## CONFLICT OF INTEREST

The authors declare no conflict of interest in this study.

## REFERENCE

- Azab, B., Zaher, M., Weiserbs, K. F., Torbey, E., Lacossiere, K., Gaddam, S., Gobunsuy, R., Jadonath, S., Baldari, D., McCord, D., & Lafferty, J. (2010). Usefulness of neutrophil to lymphocyte ratio in predicting short-and long-term mortality after NonST-elevation myocardial infarction. *American Journal of Cardiology*, *106*(4), 470–476. <https://doi.org/10.1016/j.amjcard.2010.03.062>
- Chen, N., Zhou, M., Dong, X., Qu, J., Gong, F., Han, Y., Qiu, Y., Wang, J., Liu, Y., Wei, Y., Xia, J., Yu, T., Zhang, X., & Zhang, L. (2020). Epidemiological and clinical characteristics of 99 cases of 2019 novel coronavirus pneumonia in Wuhan, China: a descriptive study. *The Lancet*, *395*(10223), 507–513. [https://doi.org/10.1016/S0140-6736\(20\)30211-7](https://doi.org/10.1016/S0140-6736(20)30211-7)
- Fan, B. E., Chong, V. C. L., Chan, S. S. W., Lim, G. H., Lim, K. G. E., Tan, G. B., Mucheli, S. S., Kuperan, P., & Ong, K. H. (2020). Hematologic parameters in patients with COVID-19 infection. *American Journal of Hematology*, *95*(6), E131–E134. <https://doi.org/10.1002/ajh.25774>
- Giede-Jeppe, A., Bobinger, T., Gerner, S. T., Sembill, J. A., Sprügel, M. I., Beuscher, V. D., Lücking, H., Hoelter, P., Kuramatsu, J. B., & Huttner, H. B. (2017). Neutrophil-to-Lymphocyte Ratio Is an Independent Predictor for In-Hospital Mortality in Spontaneous Intracerebral Hemorrhage. *Cerebrovascular Diseases*, *44*(1–2), 26–34. <https://doi.org/10.1159/000468996>
- Guan, W., Ni, Z., Hu, Y., Liang, W., Ou, C., He, J., Liu, L., Shan, H., Lei, C., Hui, D. S. C., Du, B., Li, L., Zeng, G., Yuen, K.-Y., Chen, R., Tang, C., Wang, T., Chen, P., Xiang, J., ... Zhong, N. (2020). Clinical Characteristics of Coronavirus Disease 2019 in China. *New England Journal of Medicine*, *382*(18), 1708–1720. <https://doi.org/10.1056/NEJMoa2002032>
- Guthrie, G. J. K., Charles, K. A., Roxburgh, C. S. D., Horgan, P. G., McMillan, D. C., & Clarke, S. J. (2013). The systemic inflammation-based neutrophil-lymphocyte ratio: Experience in patients with cancer. In *Critical Reviews in Oncology/Hematology* (Vol. 88, Issue 1, pp. 218–230). Crit Rev Oncol Hematol. <https://doi.org/10.1016/j.critrevonc.2013.03.010>

- Ha, Y.-J., Hur, J., Go, D. J., Kang, E. H., Park, J. K., Lee, E. Y., Shin, K., Lee, E. B., Song, Y. W., & Lee, Y. J. (2018). Baseline peripheral blood neutrophil-to-lymphocyte ratio could predict survival in patients with adult polymyositis and dermatomyositis: A retrospective observational study. *PLOS ONE*, *13*(1), e0190411. <https://doi.org/10.1371/journal.pone.0190411>
- Hu, Z., Song, C., Xu, C., Jin, G., Chen, Y., Xu, X., Ma, H., Chen, W., Lin, Y., Zheng, Y., Wang, J., Hu, Z., Yi, Y., & Shen, H. (2020). Clinical characteristics of 24 asymptomatic infections with COVID-19 screened among close contacts in Nanjing, China. *Science China Life Sciences*, *63*(5), 706–711. <https://doi.org/10.1007/s11427-020-1661-4>
- Huang, C., Wang, Y., Li, X., Ren, L., Zhao, J., Hu, Y., Zhang, L., Fan, G., Xu, J., Gu, X., Cheng, Z., Yu, T., Xia, J., Wei, Y., Wu, W., Xie, X., Yin, W., Li, H., Liu, M., ... Cao, B. (2020). Clinical features of patients infected with 2019 novel coronavirus in Wuhan, China. *The Lancet*, *395*(10223), 497–506. [https://doi.org/10.1016/S0140-6736\(20\)30183-5](https://doi.org/10.1016/S0140-6736(20)30183-5)
- Huang, Y., Tu, M., Wang, S., Chen, S., Zhou, W., Chen, D., Zhou, L., Wang, M., Zhao, Y., Zeng, W., Huang, Q., Xu, H., Liu, Z., & Guo, L. (2020). Clinical characteristics of laboratory confirmed positive cases of SARS-CoV-2 infection in Wuhan, China: A retrospective single center analysis. *Travel Medicine and Infectious Disease*, *36*. <https://doi.org/10.1016/j.tmaid.2020.101606>
- Li, Qilin, Ding, X., Xia, G., Geng, Z., Chen, F., Wang, L., & Wang, Z. (2020). A simple laboratory parameter facilitates early identification of COVID-19 patients. In *medRxiv*. <https://doi.org/10.1101/2020.02.13.20022830>
- Li, Qun, Guan, X., Wu, P., Wang, X., Zhou, L., Tong, Y., Ren, R., Leung, K. S. M., Lau, E. H. Y., Wong, J. Y., Xing, X., Xiang, N., Wu, Y., Li, C., Chen, Q., Li, D., Liu, T., Zhao, J., Liu, M., ... Feng, Z. (2020). Early Transmission Dynamics in Wuhan, China, of Novel Coronavirus–Infected Pneumonia. *New England Journal of Medicine*, *382*(13), 1199–1207. <https://doi.org/10.1056/NEJMoa2001316>
- Lin, Y., Ji, C., Weng, W., Xu, P., Hu, Y., Liang, W., ... J. P.-C. (2020). Epidemiological and Clinical Characteristics of 124 Elderly Outpatients with COVID-19 in Wuhan, China. *Lancet*. <https://doi.org/10.2139/ssrn.3543596>
- Lippi, G., & Plebani, M. (2020). Laboratory abnormalities in patients with COVID-2019 infection. In *Clinical Chemistry and Laboratory Medicine* (Vol. 58, Issue 7, pp. 1131–1134). De Gruyter. <https://doi.org/10.1515/cclm-2020-0198>
- Liu, F., Xu, A., Zhang, Y., Xuan, W., Yan, T., Pan, K., Yu, W., & Zhang, J. (2020). Patients of COVID-19 may benefit from sustained Lopinavir-combined regimen and the increase of Eosinophil may predict the outcome of COVID-19 progression. *International Journal of Infectious Diseases*, *95*, 183–191. <https://doi.org/10.1016/j.ijid.2020.03.013>
- Liu, J., Li, S., Liu, J., Liang, B., Wang, X., Wang, H., Li, W., Tong, Q., Yi, J., Zhao, L., Xiong, L., Guo, C., Tian, J., Luo, J., Yao, J., Pang, R., Shen, H., Peng, C., Liu, T., ... Zheng, X. (2020). Longitudinal characteristics of lymphocyte responses and cytokine profiles in the peripheral blood of SARS-CoV-2 infected patients. *EBioMedicine*, *55*, 102763. <https://doi.org/10.1016/j.ebiom.2020.102763>
- Paules, C. I., Marston, H. D., & Fauci, A. S. (2020). Coronavirus Infections—More Than Just the Common Cold. In *JAMA - Journal of the American Medical Association* (Vol. 323, Issue 8, pp. 707–708). American Medical Association. <https://doi.org/10.1001/jama.2020.0757>
- Qu, R., Ling, Y., Zhang, Y., Wei, L., Chen, X., Li, X., Liu, X., Liu, H., Guo, Z., Ren, H., & Wang, Q. (2020). Platelet-to-lymphocyte ratio is associated with prognosis in

- patients with Corona Virus Disease-19. *Journal of Medical Virology*, jmv.25767. <https://doi.org/10.1002/jmv.25767>
- Shoenfeld, Y., Gurewich, Y., Gallant, L. A., & Pinkhas, J. (1981). Prednisone-induced leukocytosis. Influence of dosage, method and duration of administration on the degree of leukocytosis. *The American Journal of Medicine*, 71(5), 773–778. [https://doi.org/10.1016/0002-9343\(81\)90363-6](https://doi.org/10.1016/0002-9343(81)90363-6)
- Terpos, E., Ntanasis-Stathopoulos, I., Elalamy, I., Kastritis, E., Sergentanis, T. N., Politou, M., Psaltopoulou, T., Gerotziafas, G., & Dimopoulos, M. A. (2020). Hematological findings and complications of COVID-19. *American Journal of Hematology*, 95(7), 834–847. <https://doi.org/10.1002/ajh.25829>
- Wang, W., Tang, J., & Wei, F. (2020). Updated understanding of the outbreak of 2019 novel coronavirus (2019-nCoV) in Wuhan, China. *Journal of Medical Virology*, 92(4), 441–447. <https://doi.org/10.1002/jmv.25689>
- Xu, X. W., Wu, X. X., Jiang, X. G., Xu, K. J., Ying, L. J., Ma, C. L., Li, S. B., Wang, H. Y., Zhang, S., Gao, H. N., Sheng, J. F., Cai, H. L., Qiu, Y. Q., & Li, L. J. (2020). Clinical findings in a group of patients infected with the 2019 novel coronavirus (SARS-Cov-2) outside of Wuhan, China: Retrospective case series. *The BMJ*, 368. <https://doi.org/10.1136/bmj.m606>
- Yang, A. P., Liu, J. ping, Tao, W. qiang, & Li, H. ming. (2020). The diagnostic and predictive role of NLR, d-NLR and PLR in COVID-19 patients. *International Immunopharmacology*, 84, 106504. <https://doi.org/10.1016/j.intimp.2020.106504>
- Yi, Y., Lagniton, P. N. P., Ye, S., Li, E., & Xu, R. H. (2020). COVID-19: What has been learned and to be learned about the novel coronavirus disease. *International Journal of Biological Sciences*, 16(10), 1753–1766. <https://doi.org/10.7150/ijbs.45134>

# Complete Blood Cells Findings Among Covid-19 In-Patients at Covid-19 Reference Hospitals, West Nusa Tenggara

## ORIGINALITY REPORT

12%

SIMILARITY INDEX

10%

INTERNET SOURCES

10%

PUBLICATIONS

2%

STUDENT PAPERS

## PRIMARY SOURCES

1	<a href="http://www.tandfonline.com">www.tandfonline.com</a> Internet Source	3%
2	<a href="http://onlinelibrary.wiley.com">onlinelibrary.wiley.com</a> Internet Source	2%
3	Submitted to Poltekkes Kemenkes Banjarmasin Student Paper	1%
4	<a href="http://covid.yale.edu">covid.yale.edu</a> Internet Source	1%
5	<a href="http://link.springer.com">link.springer.com</a> Internet Source	1%
6	<a href="http://download.atlantis-press.com">download.atlantis-press.com</a> Internet Source	1%
7	<a href="http://mpira.ub.uni-muenchen.de">mpira.ub.uni-muenchen.de</a> Internet Source	1%
8	Ai-Ping Yang, Jianping Liu, Wenqiang Tao, Hui-ming Li. "The diagnostic and predictive role of	1%

# NLR, d-NLR and PLR in COVID-19 patients", International Immunopharmacology, 2020

Publication

---

9	<a href="http://koreascience.or.kr">koreascience.or.kr</a> Internet Source	1 %
10	<a href="http://eppi.ioe.ac.uk">eppi.ioe.ac.uk</a> Internet Source	1 %
11	<a href="http://medicopublication.com">medicopublication.com</a> Internet Source	1 %

---

Exclude quotes Off

Exclude matches < 1%

Exclude bibliography On



# Complete Blood Cells Findings Among Covid-19 In-Patients at Covid-19 Reference Hospitals, West Nusa Tenggara

---

GRADEMARK REPORT

---

FINAL GRADE

**/0**

GENERAL COMMENTS

**Instructor**

---

PAGE 1

---

PAGE 2

---

PAGE 3

---

PAGE 4

---

PAGE 5

---

PAGE 6

---

PAGE 7

---

PAGE 8

---

PAGE 9

---

PAGE 10

---

PAGE 11

---